

Blackline F15⁺

Compact, two-way passive system

features

- ▶ Wide-bandwidth system
- ▶ User rotatable 80° x 50° horn
- ▶ Top hat fitting for speaker stand mounting
- ▶ 1.4" (35mm) exit compression driver
- ▶ Five year limited warranty

applications

- ▶ Live club performance
- ▶ High powered stage monitoring
- ▶ Club installs



professional

The high power **Blackline F15⁺** is a high performance, wide-bandwidth system in a compact and efficient package. Extended frequency response is provided by a new 15" (380mm) LF driver and a new 1.4" (35mm) exit compression driver mounted on a rotatable 80° x 50° constant directivity HF horn. The new LF driver features a tough, water resistant cone and a lightweight, high BL, neodymium motor system with inside/outside coil windings for improved heat transfer. An aluminium demodulating ring reduces distortion and improves midrange clarity at high levels and increased excursion is available via a triple roll surround and deep motor structure. The new HF driver utilises a titanium diaphragm with controlled break-up modes for improved sonic performance at high frequencies and the crossover design and LF cone profile have been optimised to match the directivity of the HF horn and LF section through the crossover region.

The F15⁺ is perfect for higher power applications where ease of installation, or speed of deployment, are important factors. Its ergonomic design and rotatable HF horn makes near-ceiling mounting and aiming easy in venues with restricted height, whilst its multi-angle birch ply cabinet allows it also to be used as a high power floor monitor. Its twelve M8 inserts make a variety of horizontal or vertical mounting methods possible.

The F15⁺ comes with a top hat fitting for speaker stand mounting. This fitting can also be used as a pole socket when the F15⁺ is used with, for instance, a Blackline S18⁺ subwoofer.

A Martin Audio M3⁺ or DXI Electronic Controller is available to provide F15⁺/subwoofer crossover and limiter facilities.

Century Point, Halifax Road, Cressex Business Park,
High Wycombe, Buckinghamshire HP12 3SL, England.
Telephone: +44 (0)1494 535312 Facsimile: +44 (0)1494 438669
E-mail: info@martin-audio.com
All information is Copyright © 2008 Martin Audio Ltd.

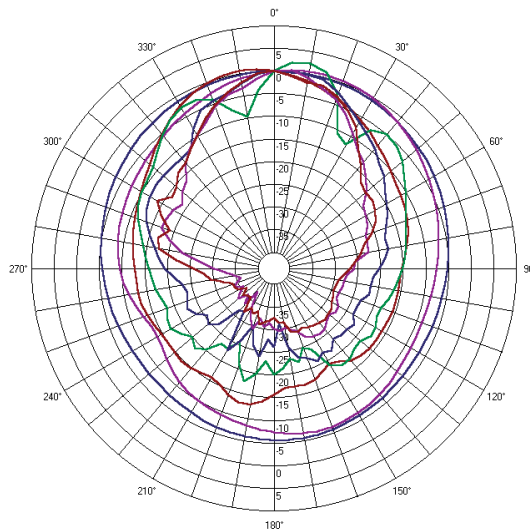


Blackline F15⁺

Compact, two-way passive system

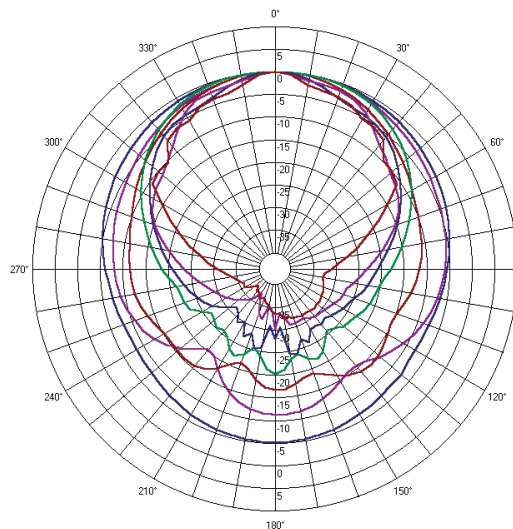
polar plots

professional



F15⁺ Vertical

- 200Hz & 1/3 8ve
- 400Hz & 1/3 8ve
- 800Hz & 1/3 8ve
- 1600Hz & 1/3 8ve
- 3200Hz & 1/3 8ve
- 6400Hz & 1/3 8ve
- 12800Hz & 1/3 8ve



F15⁺ Horizontal

- 200Hz & 1/3 8ve
- 400Hz & 1/3 8ve
- 800Hz & 1/3 8ve
- 1600Hz & 1/3 8ve
- 3200Hz & 1/3 8ve
- 6400Hz & 1/3 8ve
- 12800Hz & 1/3 8ve

Century Point, Halifax Road, Cressex Business Park,
High Wycombe, Buckinghamshire HP12 3SL, England.
Telephone: +44 (0)1494 535312 Facsimile: +44 (0)1494 438669
E-mail: info@martin-audio.com
All information is Copyright © 2008 Martin Audio Ltd.

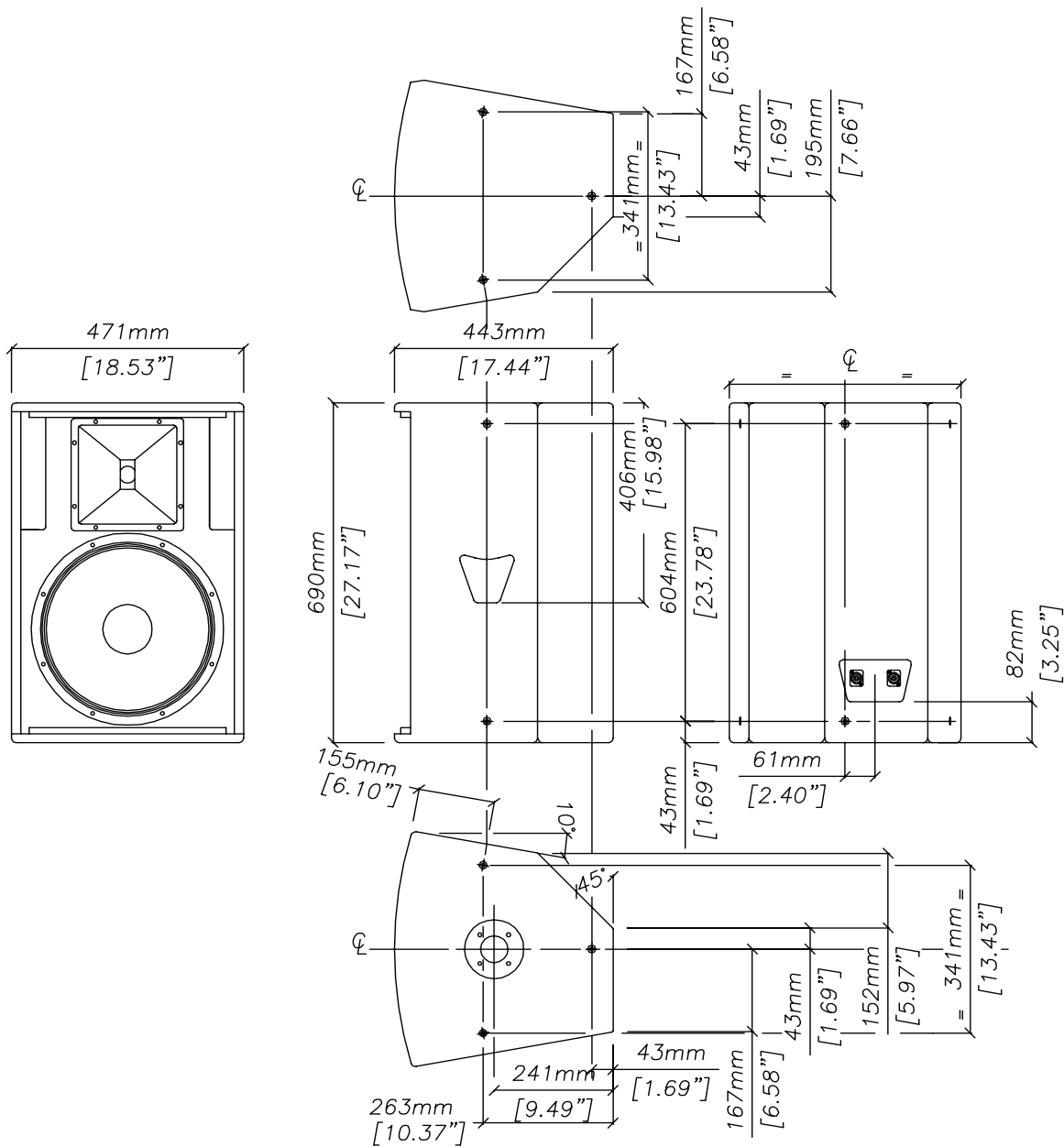


Blackline F15+

Compact, two-way passive system

overall dimensions

professional



F15+

All information is Copyright © 2007 Martin Audio Ltd.

Century Point, Halifax Road, Cressex Business Park,
High Wycombe, Buckinghamshire HP12 3SL, England.
Telephone: +44 (0)1494 535312 Facsimile: +44 (0)1494 438669
E-mail: info@martin-audio.com
All information is Copyright © 2008 Martin Audio Ltd.



Blackline F15⁺

Compact, two-way passive system

professional

technical specifications

TYPE	Compact, two-way passive
FREQUENCY RESPONSE (5)	55Hz-18kHz \pm 3dB -10dB @ 45Hz
DRIVERS	15" (380mm)/3" (75mm) voice coil, neodymium magnet LF driver 1.4" (35mm) exit HF compression driver
RATED POWER (2)	400W AES, 1600W peak
RECOMMENDED AMPLIFIER	400W-1200W into 4 ohms
SENSITIVITY (6)	100dB
MAXIMUM SPL (7)	124dB continuous, 130dB peak
NOMINAL IMPEDANCE	8 ohms
DISPERSION (-6dB)	80° horizontal, 50° vertical
CROSSOVER	1.4 kHz passive
ENCLOSURE	68 litre, multi-laminate birch ply
FINISH	Textured black paint
PROTECTIVE GRILLE	Black perforated steel
CONNECTORS	2 x Neutrik NL4
PIN CONNECTIONS	FR+, - : 1+, 1-, Link thro': 2+, 2-
FITTINGS	12 x M8 threaded inserts 1 x mounting pole socket 2 x pocket handles
DIMENSIONS	(W) 471mm x (H) 690mm x (D) 443mm (W) 18.5ins x (H) 27.2ins x (D) 17.5ins
WEIGHT	30.5 kg (67lbs)

accessories

- HTKF15Y Flying Yoke for F15⁺
HTKCT04 Pole for Blackline⁺
HTKCT05 8mm Shouldered Eye Bolt for
F8⁺, F10⁺, F12⁺, F15⁺

Notes

- (1) Measured on-axis in half space at 2 metres, then referred to 1 metre.
- (2) AES Standard ANSI S4.26-1984.
- (3) Measured in half space at 2 metres with 1 watt input, using band limited pink noise, then referred to 1 metre.
- (4) Measured in half space at 2 metres using band limited pink noise, then referred to 1 metre.
- (5) Measured on-axis in open (4 π) space at 2 metres, then referred to 1 metre.
- (6) Measured in open (4 π) space at 2 metres with 1 watt input, using band limited pink noise, then referred to 1 metre.
- (7) Measured in open (4 π) space at 2 metres using band limited pink noise, then referred to 1 metre.

Trade Descriptions Act

Due to Martin Audio's policy of continuing improvement, we reserve the right to alter these specifications without prior notice. Martin Audio is committed to refining state of the art sound reinforcement, combining in-depth product and field applications research with advanced manufacturing techniques. Every Martin Audio product is built to the highest manufacturing standards and rigorously tested to ensure that it meets the performance criteria specified in the design.

architectural and engineering specifications

The loudspeaker system shall be of the two-way passive type consisting of one 15" (380mm)/3" (75mm) voice coil direct radiating reflex loaded low frequency transducer and one 1.4" (35mm) exit HF compression driver mounted on a user rotatable constant directivity horn in a multi-angled enclosure. The enclosure shall be of a multi-laminate birch ply construction with integral pole mount and threaded inserts for wall and ceiling mounting. Low and high frequency sections shall be integrated by an internal 1.4kHz passive crossover network.

Performance of the loudspeaker system with its electronic controller shall meet or exceed the following criteria:

Frequency response measured 1 metre on axis shall be 55Hz-18kHz \pm 3dB.

High frequency dispersion at -6dB points shall be 80°H x 50°V.

Power handling shall be 400W AES, 1600W peak.

Rated impedance shall be 8 ohms.

Maximum SPL measured at 1 metre on axis shall be 124dB continuous, 130dB peak.

Dimensions (W) 471mm x (H) 690mm x (D) 443mm (18.5ins x 27.2ins x 17.5ins).

Weight 30.5kg (67lbs).

The loudspeaker system shall be the Martin Audio F15⁺.

Century Point, Halifax Road, Cressex Business Park,
High Wycombe, Buckinghamshire HP12 3SL, England.
Telephone: +44 (0)1494 535312 Facsimile: +44 (0)1494 438669
E-mail: info@martin-audio.com
All information is Copyright © 2008 Martin Audio Ltd.

